

Dear Customer,

Congratulations for choosing the high-quality products made by Profin. To be able to enjoy the elegant appearance and the reliability of the Profin products, we ask You to note the following instructions for the use and maintenance of the products. **Please familiarize yourself also with the common instructions for receiving, construction-time storing and the usage of the products. Following the maintenance and installation instructions are also a prerequisite for the validity of the guarantee given for our doors.**

Installation

Please, notice that the products will not be installed until the conditions inside the building are correspondent to the final consumption conditions!

It is particularly important for the products' functionality that installation is made carefully. For reaching the best possible final result, we recommend to use professionals for the product installations. The guarantee is not compensating injuries caused by the products' incorrect installation. Never use the products as a supporting structure. **In log houses enough space for sinking has to be reserved (ensure the issue from the log house supplier).**

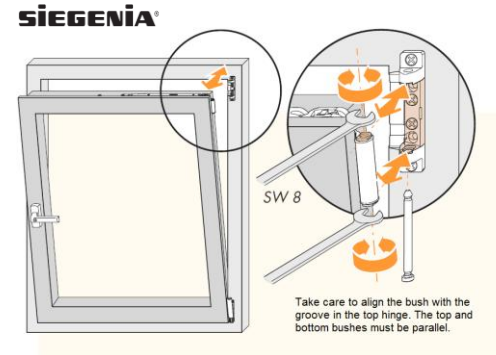
If You need to protect the products, please use only a tape which is suitable for painted surface. Protection time has to be minimized in order to avoid the decaling to cause any damages on the products. Decaling is done always on the client's own responsibility.

Before installing, ensure that the water dripping from the wall will not penetrate behind the architraves or widening boards to the door's installation gaps or to the frame structures. This has to be ensured by using tall enough waterboards above and by sealing the gaps between the architraves and widening boards by using the sealing mass.

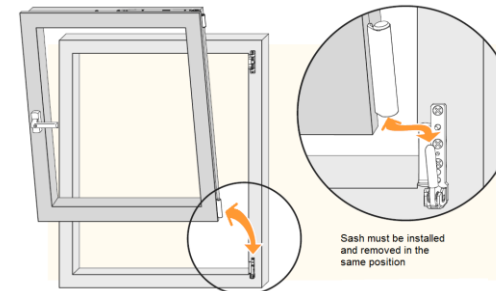
Installation stages

1. Check installation opening and fastening points of the frames.
2. Put the required amount of the assembly wedges underside the installation opening. Put the wedges also under the intermediate frames. Instead of the wedges it is possible to use the installation screws. Isolation margin of the frame and installation opening has to be all around at least 10 mm.
3. To make installation easier separate the sash from the frame (**pictures 1+2**).
4. Lift the frame to the installation opening.
5. Check the frame's horizontal plane by using the spirit level or the laser indicator, regulate if necessary.
6. First fasten the frame's hinge side.
7. Check the frame's vertical position on both sides and depth direction by using the spirit level or the laser indicator (**picture 3**), regulate if necessary.
8. Fasten the sash again (**pictures 1+2**) and test the window's functionality, regulate if necessary.
9. Fasten the frame's handle side on the same way as the hinge side. Test the window's functionality and fasten the frames conclusively. In the windows which are wider than 1,2 metres, we recommend to fasten the top frame. **Notice, in log houses fasten the frames to the well supported T-boards. DK-fix can be installed with fastener (pictures 4+5). Other installation options are the installation screws, wedges or fasteners (pictures 6+7+8).** **Fastening has to be done always without bending any frames and making sure that the frame corner joints do not open. Additionally, ensure that the lower and side frames are installed precisely straight.**
10. Seal the installation gap between the frame and the wall trunk e.g. by using the mineral glass or fibre wool. We do not recommend using any urethane foam especially not in the log houses where sinking of the wall may cause air leaks and frame warping.

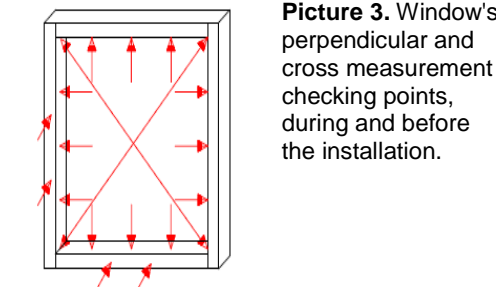
11. Finally, install the handle according to the instruction that can be found from the package.



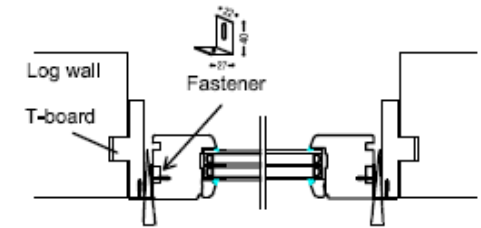
Picture 1. Sash releasing and fastening.



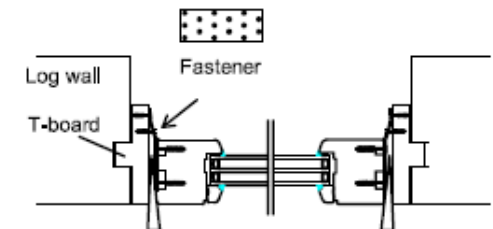
Picture 2. Sash releasing from the frame and installation to the frame.



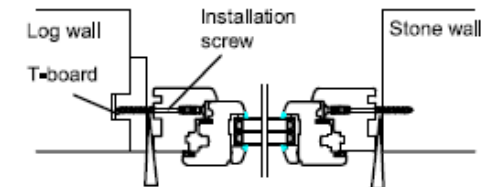
Picture 3. Window's perpendicular and cross measurement checking points, during and before the installation.



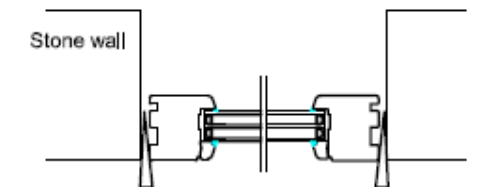
Picture 4. DK-Fix window installation with the fastener to the T-board.



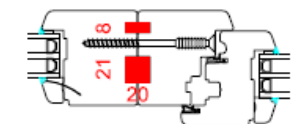
Picture 5. DK-Fix window installation with the fastener to the T-board.



Picture 6. Opening DK-window installation to the T-board or stone wall.



Picture 7. DK-Fix window installation to the stone wall.



Picture 8. Adjacent DK-windows installation with wooden battens.

Maintenance of the door

It is advisable to check and clean the door regularly. This should be done at least twice a year depending on the usage conditions.

Glass surfaces

Clean the glass surfaces when needed. The glass surfaces do not endure strongly alkaline materials, e.g. cement, chaulk and alkaline detergents.

For cleaning the glass surfaces diluted common detergents or special made products for glass surfaces can be used. **Always look after that the washing water so that it will not reach between the glass and wood. This way any damages in the product's structure can be avoided.**

When cleaning coated glass, the cleaning methods have to be verified from the glass manufacturer.

Door and frames

It is advisable to check and clean the door and the visible frames approximately every half a year depending on the local conditions. Cleaning can be done with common detergents.

If any damages on the wooden parts' surface treatment are noted, the repair painting operation has to be done immediately. When making the repair painting, wooded parts' humidity percent has to be under 15 %, which can be reached in the summertime.

Instructions for the repair painting:

1. Remove loosen paint, lacquer and wood e.g. with brush.
2. Polish the surfaces which will be painted and remove the grindings carefully.
3. Wash the surfaces which will be painted with the cleansing solution and let it dry (follow the manufacturer's instructions).
4. Treat the visible surfaces with the paint and let it dry.
5. Paint the surfaces for three times with paint suitable for the purpose (outside use only the paints meant for the outside use). Notice, do not paint sealing parts, because they may damage when reacting with the paint.

Sealings and silicone stitchings

Product's sealings and silicone stitchings need to be checked also during the maintenance. Damaged sealings have to be changed for new intact ones to retain the energy efficiency. When necessary, resit the silicone stitchings to retain the water resistance.

Fittings

Fittings have to be remained clean. Cleaning the fittings can be done with common detergents. Mechanical parts have to be oiled e.g. with a lock oil when necessary. Especially handles' mechanical parts need to be oiled regularly.

Notice

The surface treatment will hold its properties approximately for 5 – 15 years depending on the usage conditions. In order to extend the life cycle of the product to its maximum, please repaint when necessary. Note also the environmental effects of dirt, humidity and light conditions.



www.profin.fi